



Our Palate Free Approaches to Soft Tissue Treatment

Geistlich Mucograft®
Geistlich Mucograft® Seal
Geistlich Fibro-Gide®

leading regeneration

Geistlich

Palate Free Innovation

Predictable Regeneration Has a Softer Side

Geistlich leads regeneration through science, innovation and quality:

- › Scientific collaboration with more than 100 universities and leading surgeons
- › Manufacturing with the highest quality and safety standards
- › Collagen expertise fuels soft tissue treatment innovation with our selection of matrices



Let Your Patient Go Palate Free

Both of our unique matrices have been specifically designed for soft tissue regeneration procedures, each with the ideal characteristics for their intended indications. Your patients will appreciate these outstanding benefits:

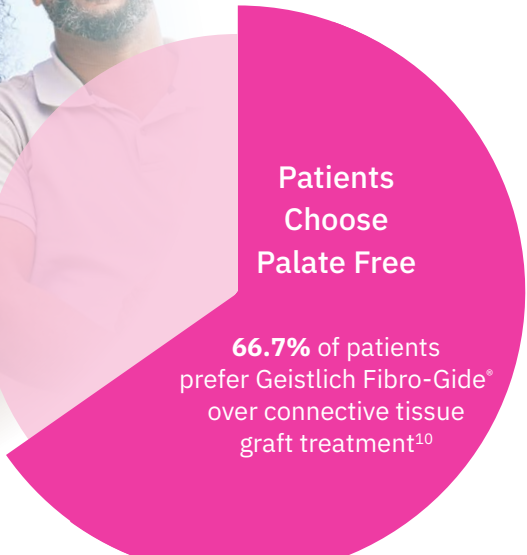
- › Less Pain and Morbidity ¹⁻⁴
- › Faster / Complication Free Soft Tissue Healing ^{4,5}
- › Natural Soft Tissue Color and Good Integration ^{1-3,6-9}

Your palate free solutions are:

- > Geistlich Mucograft® – The ideal matrix for recession defects and gain of keratinized tissue where open healing is required.
- > Geistlich Fibro-Gide® – The first volume-stable collagen matrix designed to increase soft tissue volume when closed healing is necessary.



Scan for more information on our soft tissue solutions



What’s the Right Choice for You?

Geistlich Mucograft®



Geistlich Fibro-Gide®



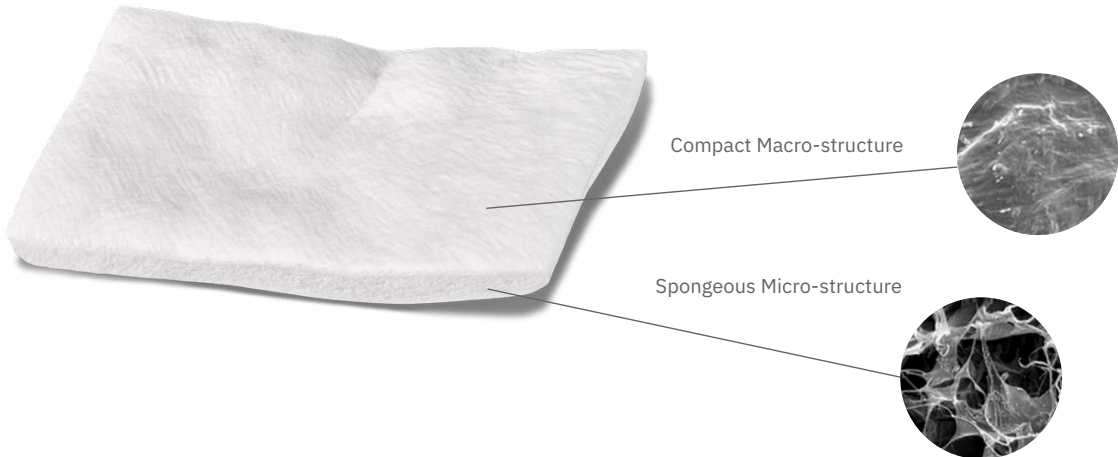
Compact and spongy layer	Structure	Porous layer
Reconstituted collagen – no cross-linking	Cross-linking	Reconstituted collagen – smart cross-linking
Reduced volume stability	Stability	Good volume stability
Open and submerged healing	Healing	Submerged healing
Gain of keratinized tissue Socket Seal Vestibuloplasty	Indications	Soft tissue volume augmentation around implants and natural teeth, and under pontics Recession Coverage
“More than two-thirds of the patients preferred the appearance of collagen matrix therapy.” ⁷	Patient Reported Outcomes	“One of the greatest benefits of using soft tissue substitutes is decreased patient morbidity.” ¹¹

Geistlich Mucograft®

Redefining the Soft Tissue Matrix

For nearly a decade, Geistlich Mucograft® and its combination of intact and fragmented fibrillar collagen, has created an optimal healing matrix.

- › Two structures – compact macro-structure provides stability while allowing open healing; the spongy micro-structure supports blood clot stabilization and ingrowth of soft tissue cells
- › Design – reconstituted collagen - no cross-linking. Provides a requisite reinforcing matrix and a signaling source for regenerative wound healing
- › Processing – uniquely processed to encourage immediate blood clot stabilization

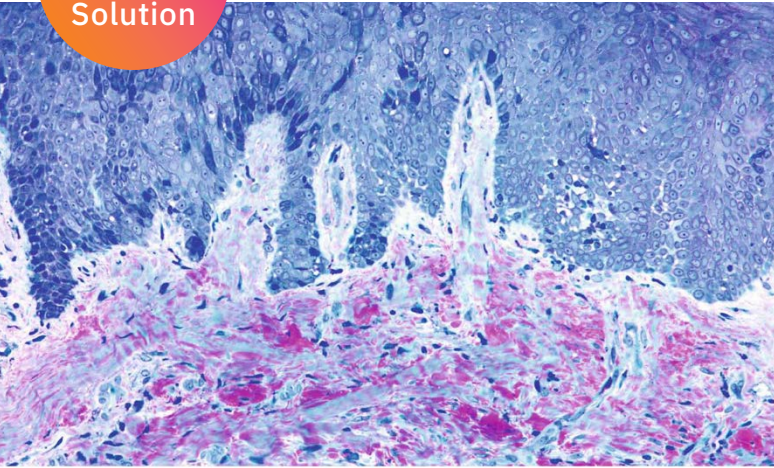


The Open Healing Solution

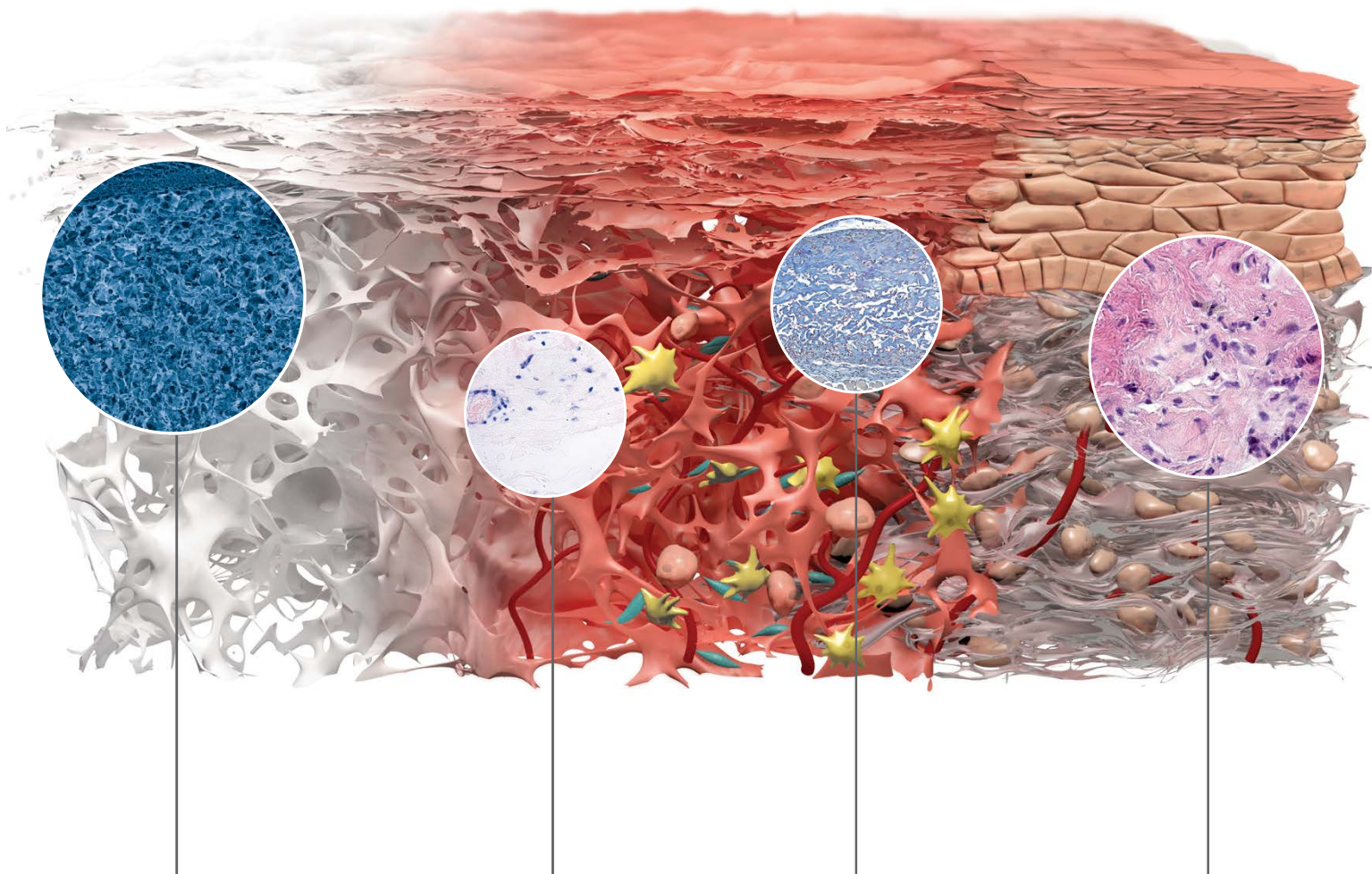
Biofunctionality in a Predictable Matrix

The Geistlich Mucograft® matrix was developed using the free gingival graft as a model and is uniquely processed to encourage immediate blood clot stabilization, making it the ideal solution for gaining keratinized tissue in open healing situations.

This leads to early vascularization,^{12,13} facilitates soft tissue cell ingrowth⁶ and good integration of the matrix with the surrounding tissues.^{11,13}



Mature connective tissue covered by keratinized epithelium 13 weeks after grafting with Geistlich Mucograft®; Magnification scale bar = 100 micron; Methylene blue-Azure II. ¹⁴



Collagen Structure

Geistlich Mucograft® consists of specially processed collagen which supports optimal ingrowth for healthy bone formation.

Easy Vascularization

Histology showing early vascularization of Geistlich Mucograft® 15 days after implantation (mouse model).^{15,16}

Cell Ingrowth

Histology 30 days after implantation (mouse model), showing soft tissue cell ingrowth into Geistlich Mucograft®.^{15,16}

Integration/Regeneration

Soft tissue integration of Geistlich Mucograft® within human connective tissue 6 weeks after clinical implantation, without any signs of a foreign body reaction.^{15,16}



Watch Geistlich Mucograft® Handling here!

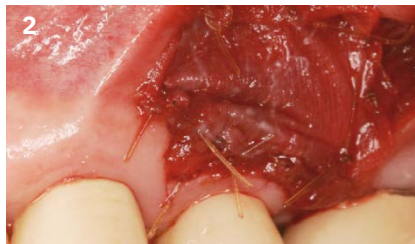
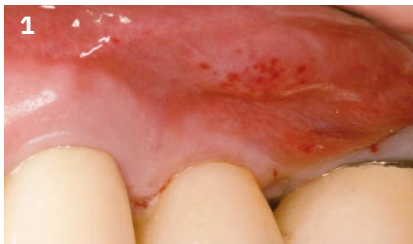


Treatment to Increase Keratinized Tissue

with Geistlich Mucograft®

Objective: Increase the width of keratinized tissue around implants with Geistlich Mucograft®, while also achieving vestibule creation and improved access for oral hygiene.

Conclusion: Geistlich Mucograft® can be used as an alternative to significantly increase the zone of keratinized and attached tissue around existing implants.



4 mm
Keratinized tissue at 6 months post-operatively



Dr. Alan Charles
Pasadena, CA, USA

Geistlich Mucograft® Seal

Soft Tissue Management Following Tooth Extraction

Ridge preservation with Geistlich Mucograft® Seal and Geistlich Bio-Oss Collagen® minimizes ridge resorption in extraction sockets with preserved alveolar buccal walls. Soft tissue quality and maturation after 8–10 weeks provides an ideal contour for early implant placement.¹

Geistlich Mucograft® Seal and Geistlich Bio-Oss Collagen® preserve significantly more bone volume than spontaneous healing.³

Clinical Benefits

- › Faster wound healing³ and tissue integration^{17,19}
- › Natural color and texture adaptation^{18,19}
- › Simple application and shorter procedure times

For Open Healing



Treatment of Multiple Adjacent Recession Defects

with Geistlich Mucograft®

Objective: Multiple buccal recession defects ranging from 2-5 mm were noted by teeth #11-14. These defects were classified as Miller Class I where typically 100% root coverage is expected.

Conclusion: Complete root coverage and increased keratinized tissue was obtained. The patient was spared from the morbidities associated with a sub-epithelial connective tissue graft from a palatal donor site.



1 year
Complete root coverage achieved



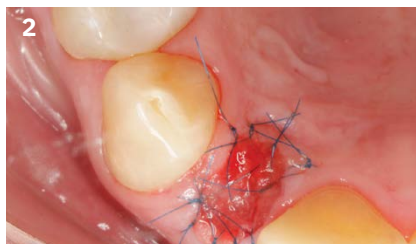
Dr. Daniel Gober
Cedarhurst, NY, USA

Insufficient Soft Tissue Thickness in a Single Tooth Gap

with Geistlich Mucograft® Seal

Objective: Minimize alveolar ridge remodeling and extraction for early implant placement in the esthetic zone.

Conclusion: The use of biomaterials post-extraction resulted in minimizing alveolar ridge volume reduction and maximizing soft tissue healing.^{18,19}



8-10
Weeks for soft tissue maturation and quality



Dr. Ken Akimoto
Issaquah, WA, USA



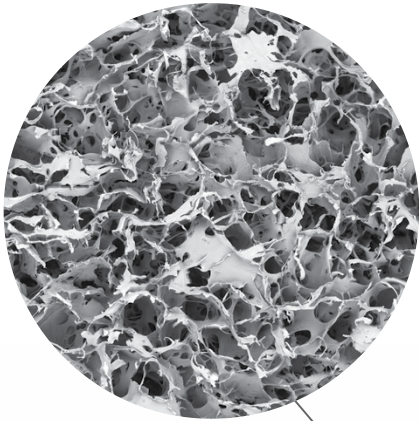
See more cases here!

Geistlich Fibro-Gide®

The Volume Stable Collagen Matrix

Nature Inspired

Geistlich Engineered

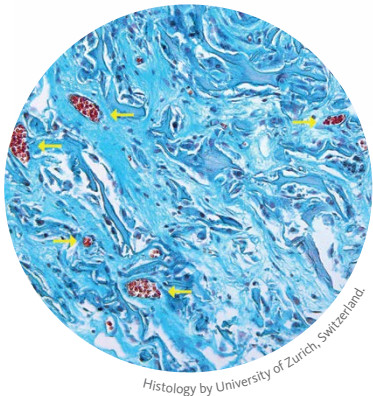


Volume Stability
The reconstituted collagen undergoes smart cross-linking for volume stability of the device.^{23,25} Thus, the porous structure allows blood clot stabilization and the ingrowth of host cells.^{20,23}



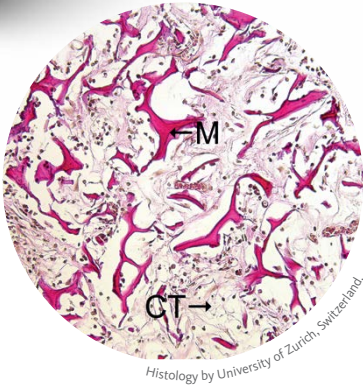
Made of Collagen
Geistlich Fibro-Gide® is a porcine, porous, resorbable and volume-stable collagen matrix.²⁵

The Alternative to Connective Tissue Graft
Geistlich Fibro-Gide® shows comparable results to connective tissue grafts in terms of change in soft-tissue volume over time.^{4,24,26}



Supports Soft-Tissue Integration
The porous network of Geistlich Fibro-Gide® supports angiogenesis (yellow arrows), formation of new connective tissue and stability of the collagen network in submerged healing situations.^{8,21}

Indications
> Insufficient soft tissue volume²⁵
> Recession defects²⁵



Soft-Tissue Formation
Animal models have shown good integration of Geistlich Fibro-Gide® into the surrounding soft-tissue while maintaining stability.⁴
(M = collagen matrix;
CT = connective tissue)

- Key Benefits:**
- › Unlimited availability and standardized quality
 - › Larger areas and more sites can be treated at the same time as there is no need to harvest tissue
 - › Versatile, indicated for natural teeth, implants, alveolar ridge reconstruction and recession defects as a submerged scaffold



Collagen Expertise: Geistlich Fibro-Gide® design features support soft tissue regeneration and volume stability.
Case by Dr. Otto Zuhr, Munich, Germany



“Avoiding a second surgical site reduces patient morbidity as well as my surgical time.”

PD Dr. Daniel Thoma
Zurich, Switzerland



Watch Geistlich Fibro-Gide®
Handling here!

Treatment of Multiple Gingival Recessions in the Anterior Region

with Geistlich Fibro-Gide®

Objective: A coronally advanced flap in combination with a xenogeneic collagen matrix was performed, with the goal of obtaining soft tissue phenotype modification concomitant to root coverage.

Conclusion: Clinical outcomes at 6 months resulted in complete root coverage of the frontal teeth, and a significant recession reduction on the first premolars.

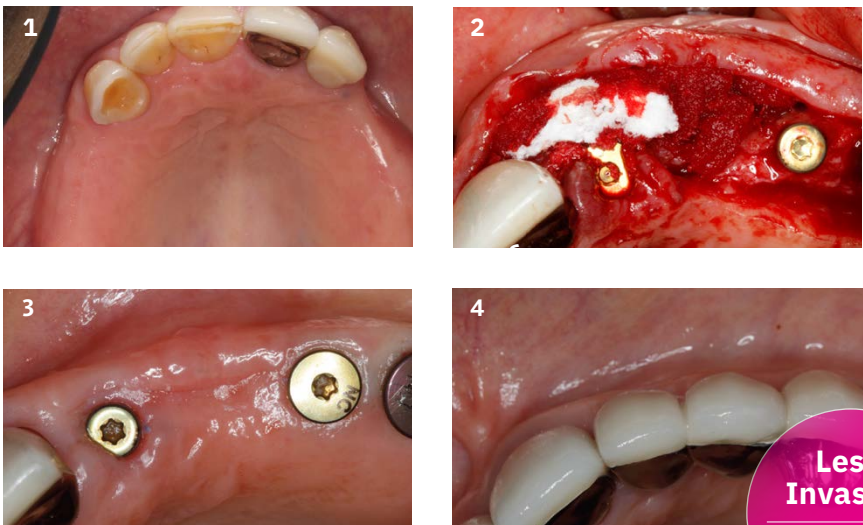


Immediate Implant Placement & Soft Tissue Thickening

with Geistlich Fibro-Gide®

Objective: Direct comparison of two different soft tissue thickening approaches around implants in the same patient. On one side Geistlich Fibro-Gide® was used and on the other side a connective tissue graft was placed.

Conclusion: Geistlich Fibro-Gide® demonstrates predictable and comparable results in soft tissue thickness augmentation around dental implants compared to a connective tissue graft.



See more cases here!



Dr. Lorenzo Tavelli
Boston, MA, USA



Dr. Waldemar Polido
Indianapolis, IN, USA

Matrices Product Range



Geistlich Mucograft®

Collagen Matrix designed specifically for soft tissue regeneration.

Product Number	Product Description	Quantity/Volume
50-1520	Geistlich Mucograft®	15 x 20 mm
50-2030	Geistlich Mucograft®	20 x 30 mm
500024	Geistlich Mucograft®	30 x 40 mm



Geistlich Mucograft® Seal

Collagen Matrix designed specifically for extraction socket management.

Product Number	Product Description	Quantity/Volume
50-0808	Geistlich Mucograft® Seal	8 mm diameter
500726	Geistlich Mucograft® Seal	12 mm diameter



Geistlich Fibro-Gide®

Volume-Stable Collagen Matrix designed specifically for connective tissue grafts.

Product Number	Product Description	Quantity/Volume
500838	Geistlich Fibro-Gide®	15 x 20 x 3 mm
500839	Geistlich Fibro-Gide®	20 x 40 x 3 mm
500272	Geistlich Fibro-Gide®	15 x 20 x 6 mm
500273	Geistlich Fibro-Gide®	20 x 40 x 6 mm

At Geistlich, over 165+ years of collagen expertise has fueled soft tissue advancement with a selection of matrices to expand therapeutic options in both open and closed healing situations.

The result is an evolution in care – a palate free approach. Positively impacting patient satisfaction with faster treatment times and considerably less pain and discomfort.

For more information, please visit: palatefree.com



Geistlich Pharma North America, Inc.
Princeton, NJ 08540
Customer Care Toll-free: 855-799-5500
info@geistlich.com
<https://geistlich.us/>

Your Partner in Predictable Regeneration

Assurance

*Your assurance, our long-term
evidence scientifically proven
in over 1400 publications.*

Proven Outcomes

*Over 15 million successfully
treated patients worldwide.*

Trustworthy

*Every 15 seconds a
Geistlich product is used.²³*

For more information, please visit:
www.geistlich.us

CAUTION: Federal law restricts these
devices to sale by or on the order of a dentist
or physician.

For more information on contraindications,
precautions, and directions for use, please
refer to the Instructions for Use at:
[https://www.geistlich-na.com/dental-professionals/
downloads-dental-professionals#61290](https://www.geistlich-na.com/dental-professionals/downloads-dental-professionals#61290)



References:

- 1 Malorana, C. et al. (2016). Open Dent J. 22(10): 395-410.
- 2 McGuire, MK, Scheyer ET. (2016). J Periodontol. 87(3): 221-227.
- 3 Sanz, M. et al. (2009). J Clin Periodontol. 36(10): 868-76.
- 4 Thoma, D.S et al. (2016). J. Clin Periodontol. 43(10): 874-85.
- 5 Thoma, D. et al. (2012). J Clin Periodontol. 39(2): 157-65.
- 6 McGuire, M.K. et al. (2010). J Periodontol. 81(8): 1108-17.
- 7 McGuire, M.K. et al. (2014). J Periodontol. 85(10): 1333-41.
- 8 Thoma, D.S et al. (2012). Clin Oral Implants. 23(12): 1333-9.
- 9 Fickl, S. et al. (2018). Int J Periodontics Restorative Dent. 38(1):e1-e7.
- 10 McGuire, MK, et al. (2022). J Periodontol. 93(3): 333-342.
- 11 Thoma DS. et al. (2020) J Clin Periodontol. 47(5):630-39
- 12 Ghanaati, S. et al. (2011). Biomed Mater. 6(1): 015010.
- 13 Rocchietta, I. et al. (2012). Int J Periodontics Restorative Dent. 32(1): e34-40.
- 14 Case by Myron Nevins, Marc L. Nevins, Soo-Woo Kim & David M. Kim. Histology by Peter Schupbach, Horgen (CH).
- 15 Ghanaati, S. et al. (2011). Biomed Mater. 6(1): 015010.
- 16 Rocchietta, I. et al. (2012). Int J Periodontics Restorative Dent. 32(1): e34-40.
- 17 Jung, R.E. et al. (2013). J Clin Periodontol. 40(1): 90-98.
- 18 Geistlich Mucograft® Seal report on the meeting of the Advisory Committee, data on file.
- 19 Thoma, D. et al. (2012). J Clin Periodontol. 39(2): 157-165.
- 20 Thoma DS. et al. (2012). Clin Oral Implants Res. 23(12): 1333-9.
- 21 Thoma DS. et al. (2015). Clin Oral Implants Res. 26(3): 263-70.
- 22 Thoma DS. et al. (2016). J Clin Periodontol. 43(10): 874-85.
- 23 Data on file. Geistlich Pharma AG, Wolhusen, Switzerland.
- 24 Zeltner M. et al. (2017). J Clin Periodontol. 44(4): 446-453.
- 25 Instructions for Use. Geistlich Fibro-Gide®. Geistlich Pharma AG, Wolhusen, Switzerland.
- 26 Huber S. et al. J Clin Periodontol 2018 Dec, 1-9 (clinical).